

# TRUCK, UTILITY, 1/4 TON GS LANDROVER, SERIES 2 AND 2A

(FITTED FOR RIFLE, 106 MM)

106 MM AMMUNITION STOWAGE COMPARTMENT

MODIFICATION INSTRUCTION

**REFERENCE:** - ACs in WM Nos 23046/7 and 24619/3.

## SUMMARY

1. This instruction details the manufacture and fitting of spacer brackets to be riveted to the base of each ammunition compartment and curved brackets fitted to the middle length of the inboard side of the compartment to prevent the ammunition from moving in the stowage space.

Estimated manhours to perform: 2.0

2. *Priority:* Group 2

3. *Vehicles affected:*

Subject vehicles.

4. *Items affected:*

106 mm Ammunition Stowage Compartments LH and RH

5. *Action required:* By RAEME workshops authorised to carry out field repair in accordance with WKSP A 850.

6. *Stores required:* (Obtainable through normal channels).

Stook No	Designation	Qty per Veh
9515-66-011-9784	STEEL STRIP, carbon, hot rolled, mild, 1 in by 1/8 in by 24 in	1
9515-66-014-2513	STEEL SHEET, carbon, hot rolled, mild, 16 BG (.062 in) 12 in by 12 in	1
NIV	RIVETS, POP, Tucker Type TLP/D/636BS	16
NIV	RIVETS, POP, Tucker Type TLP/D/639BS	6

## DETAIL

7.
  - a. Manufacture the brackets as detailed in fig 1.
  - b. Drill the rivet holes using a No 11 drill, remove all sharp edges.
  - c. Remove the covers from the top of the ammunition compartments.
  - d. Position the brackets as shown in fig 1, mark the rivet holes, then drill using the No 11 drill.
  - e. Rivet the brackets in position.
  - f. Paint new work in accordance with WKSP B 700.
  - g. Replace the covers to the ammunition compartments.
8. On completion of this modification, the numeral "5" on the modification record plate is to be defaced in accordance with WKSP A 851.

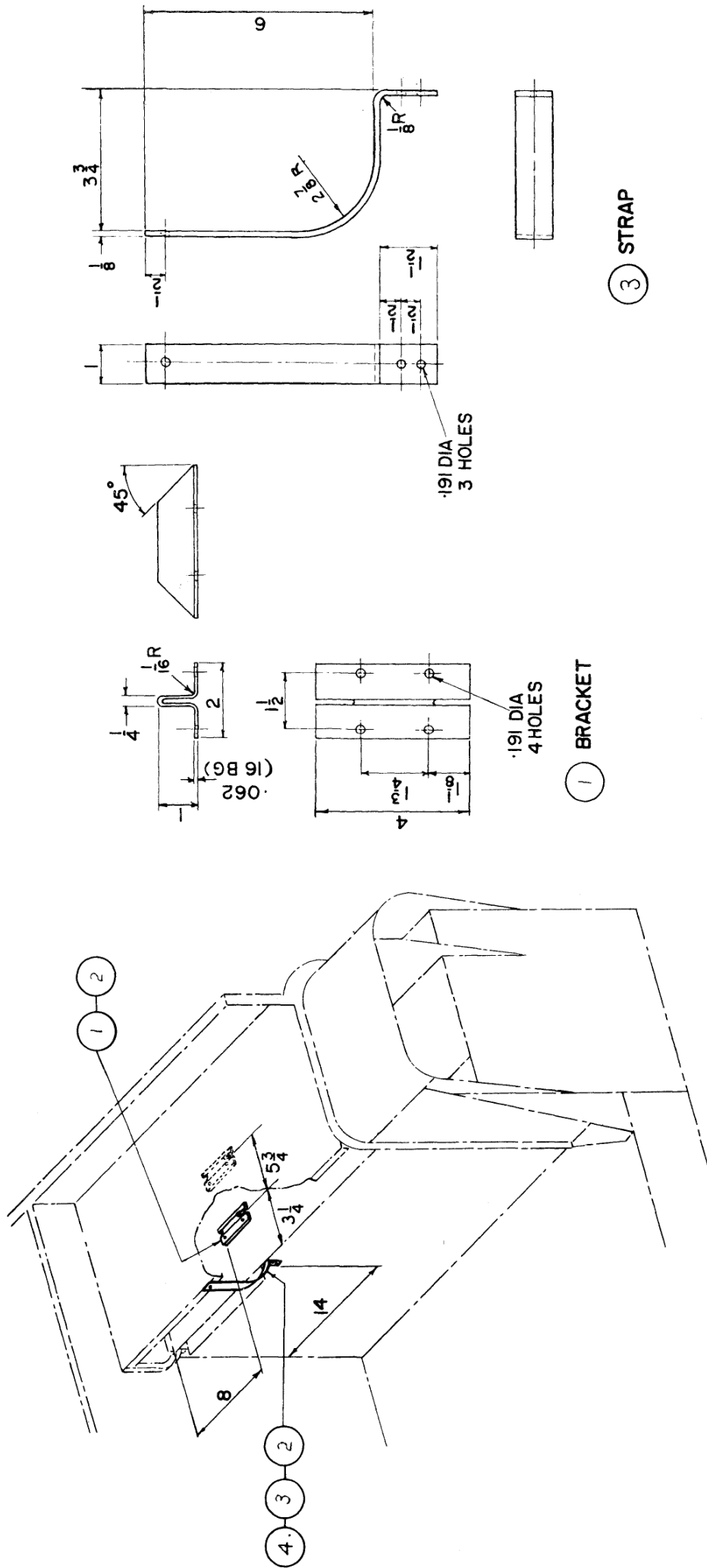


FIG 1 - SPACER BRACKETS AND SIDE BRACKET

E N D